

F BLOCK G4+G5 | EVENTS SPACE

# F BLOCK G4 + G5

THE  
TRUMAN  
BREWERY

## F BLOCK G4+G5 | EVENTS SPACE



EVENTS



MARKETS



RETAIL



FOOD & DRINK



LICENSED

### ABOUT

G4+G5 combine to create over 11,000 sqft of versatile space with glass fronted doors, crisp white walls and polished concrete floors. This combination can function as a standalone space or as a gateway to the Events Building – F Block, connecting to over 100,000sqft of space across multiple floors.

### LOCATION

G4+G5 are located on a raised ground floor on the west side of F Block, with frontage on Ely's Yard.

The area attracts many thousands of visitors to the bustling work spaces, themed events, weekend markets, eye-popping street art, boutiques, cafes and rich diversity of restaurants.

### ADDRESS

Ely's Yard, London, E1 6QL

### CAPACITY

490

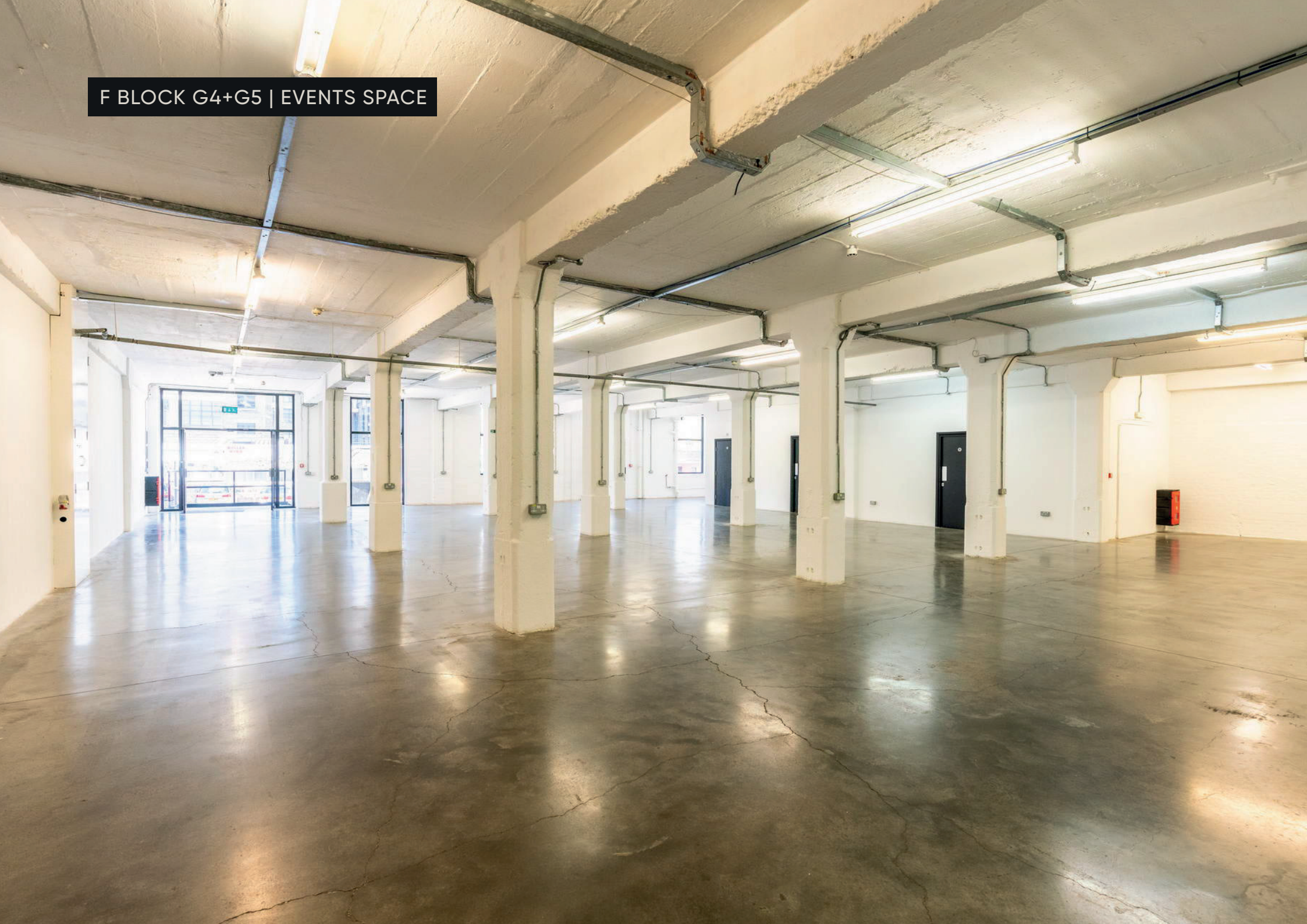
### SIZE

11,076 sqft

### LEVEL

Street Level / Raised Ground Floor

F BLOCK G4+G5 | EVENTS SPACE



## ACCESS

Access is via Ely's Yard, with 2 staircases, each leading up to a set of front doors.

G5 has a rear loading ramp which is accessible subject to prior consent.

## SERVICES

Water supply is available, subject to prior consent. G4 benefits from 1 x male toilet cubicles and three urinals, three female toilet cubicles and a disabled toilet.

G5 benefits from 4 x male toilet cubicles and urinals, with 6 x female toilet cubicles.

## COMMS

The Truman Brewery's dedicated on-site service provider, TruTec Services, can easily provide support, networking, telephony and internet connectivity to this location.

## POWER

Twin 13A Sockets throughout.

G4: 1 x 32A Single Phase Socket.

G5: 1 x 125A 3 Phase C Form Socket.

G5: 2 x 32A Single Phase C Form Socket.

## LIGHTING

Strip Lights.

## SUPPLIERS

We recommend the use of the following teams:

EVENT PRODUCTION:

**E1 PRODUCTIONS**

INTERNET CONNECTIVITY:

**TRUTEC SERVICES**

SECURITY:

**Trusec Security Ltd.**  
Event Security Services

EVENT CLEANING SERVICES:

**The Truman Brewery**  
Event Cleaning Services





LONDON  
NEW YORK  
MILAN  
PARIS



**T  
H  
E  
T  
R  
U  
M  
A  
N  
B  
R  
E  
W  
E  
R  
Y**

A: 91 Brick Lane, London E1 6QL  
T: 0207 770 6011  
E: [monika@trumanbrewery.com](mailto:monika@trumanbrewery.com)

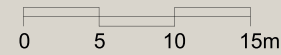
DRAWING NAME  
**F.00.ALL**

SPACE DETAILS  
**F BLOCK  
GROUND FLOOR  
G4 & G5**

VENUE LOCATION  
**F Block  
15 Hanbury Street  
London E1**

LEASE AREA (WITHIN RED BOUNDARY)

SCALE  
**1:500 @ A4**



NOTES

All measurements are approximate.  
Measurements in millimetres.

**DO NOT SCALE .  
IF IN DOUBT ASK.**



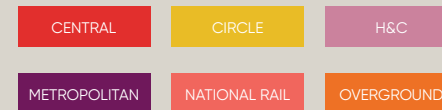


## TRANSPORT

F Block and The Truman Brewery have probably the most central Shoreditch location, and are easily reached by bus, rail, tube or on foot.

The venue benefits from close access to all forms of public transport. Liverpool Street and Shoreditch High Street stations are a short distance away, with Aldgate East within easy reach, offering fast connections across London and beyond.

**Liverpool Street Station**  
Walking distance: 10 min



**Shoreditch High Street Station**  
Walking distance: 5 min



**Aldgate East Station**  
Walking distance: 10 min



**Whitechapel Station**  
Walking distance: 15 min



## Contact us to arrange a viewing:

### Phone

+44(0)20 7770 6001

### Email

events@trumanbrewery.com

### Drop in

The Truman Brewery Events Department,  
E y's Yard,  
15 Hanbury Street,  
London E1 6QR